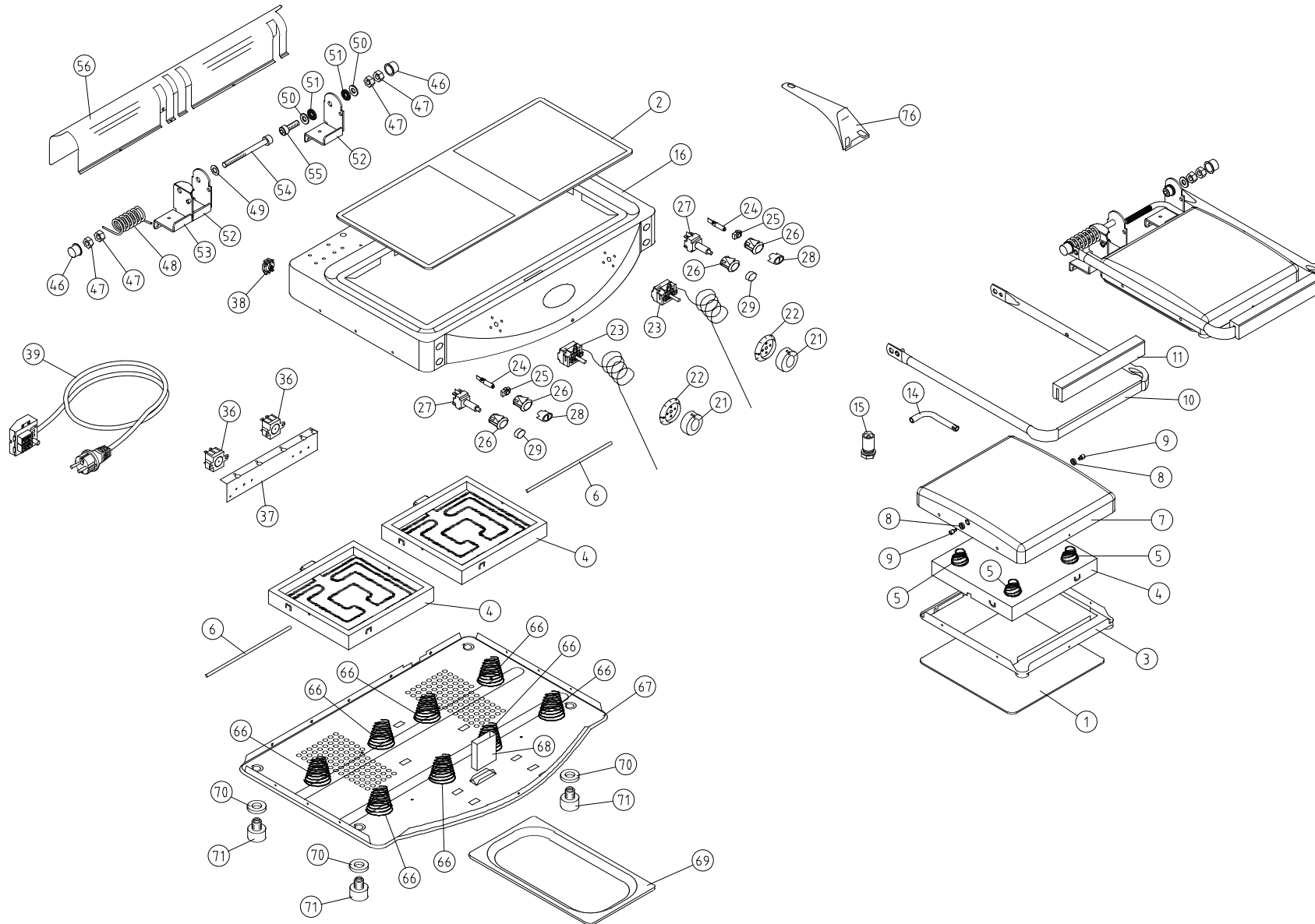


# MOD: XP020

## EXPLODED VIEW DISEGNO ESPLOSO



### LEGEND - LEGENDA

1	VT033A	56	6H169A
2	VT032A	66	RC047
3	6H147	67	4E095A
4	RS125	68	0H151A
5	RC044	69	TG080
6	RS132	70	0L001
7	2H148A	71	PD031
8	RC051A	76	VM1000A0
9	RC050A		
10	0H193B		
11	MG198A		
14	0H690A		
15	VE830		
16	0H133B		
21	MN1000A0		
22	MN1070A0		
23	TR017		
24	VE177		
25	VE162		
26	VE161		
27	VE168		
28	VE164		
29	VE176		
36	TR240		
37	0H518		
38	VM250		
39	CE120		
46	RC491		
47	VI300		
48	RC039A		
49	VI450		
50	VI528		
51	GN194		
52	0H155A		
53	0H156A		
54	VI096		
55	VI094		

# MOD: XP020

# EXPLODED VIEW DISEGNO ESPLOSO



## DESCRIZIONE CODICI

1	VT033A	VETROC.250x250x4 SINGOLO LOGO R12
2	VT032A	VETROC.546x246x4 DOPPIO LOGO R12
3	6H147	SUPP. VETRO SUP. INOX. NO PVC XP010/20 STAMPATO
4	RS125	RES.V.CER.500W 220-230V 1V110045
5	RC044	MOLLA COMPRESSI.1.5xeg31xep22x20 ZN
6	RS132	TUBETTO BULBO TERM.5781V0260 L=224
7	2H148A	INVOLUCRO EST. PORTAPIASTRA SUP. INOX FORATO
8	RC051A	RONDELLA PERNO SNODO DE=18 DI=7.2x3
9	RC050A	PERNO SNODO PIASTRA DE=6,8 L=14 FL.M5
10	OH193B	MANIGLIA PIASTRA 16x1 SV=1080mm '01
11	MG198A	MANICO LEGNO ARROTONDATO PIASTRA V.C.
14	OH690A	TUBO FILETTATO 13x1 L=106 "XP" PIEGATO
15	VE830	SERRACAVO SPEC. DC=9,5 D2=M13x1
16	OH133B	BASAMENTO INOX XP020/P '01
21	MN1000A0	MANOPOLA CON INDICE SERIGR. ARGENTO
22	MN1070A0	GHIERA PER TERMOST.120-400°C SERIGRAF. ARGENTO
23	TR017	TERMOSTATO 60-355°C S5.190.82.806
24	VE177	LUCE SPIA FLUORO STD 230V
25	VE162	SUPPORTO LAMPADA INTERNO
26	VE161	SUPPORTO D16 ELITTICO NERO PAST
27	VE168	INT.BIPOLORE NA/NA
28	VE164	GEMMA VERDE TERMOMETRO ORO
29	VE176	TASTO ARGENTO OPACO "0-1" ORO
36	TR240	TERM.TY62R TARATURA 140°C +-10°C
37	OH518	SUPPORTO TERM. SICUREZZA XP010P/20P
38	VM250	MORSETT. A PETTINE
39	CE120	CAVO 3x1,5 H07RN-F MT1,5+K2/5+SCHUKO
46	RC491	BUSSOLA COPRIDADO CIECO M10 H=15
47	VI300	DADO BASSO M10 h=6 ZN 5589 S.B.E.
48	RC039A	MOLLA A TORSIONE D.FILO 3.2 DE24x44
49	VI450	ROND.OTTONE NICH.DI=10 DE=20 sp=0.5
50	VI528	RONDELLA 10x30x2 ZN DIN-9021
51	GN194	GUARNIZIONE 27x10 Sp=2 PTFE CAR/CARB
52	OH155A	STAFFA SX PIASTRA SINGOLA E DOPPIA '00
53	OH156A	STAFFA DX PIASTRA SINGOLA E DOPPIA '00
54	VI096	VITE M10x110 TCEI 12.9 UNI5931
55	VI094	VITE M10x25 TCEI 12.9 UNI5931

56	6H169A	CARTER COPRIMECCANISMO XP020/P 1198 STAMPATO
66	RC047	MOLLA SOSTEGNO RESISTENZA V.C. H=47
67	4E095A	FONDO ZINCATO XP020/P 1198 '01
68	OH151A	TUBO SCOLO GRASSI 60x20x1,5 L=58mm
69	TG080	TEGLIA INOX 1/3 GN H=20
70	OL001	DISTANZ PIEDINO XP010P/20 35x18x6
71	PD031	PIEDINO NERO H=20 4483 EB01
76	VM1000A0	RASCHIETTO METALLICO PER VETRO CERAMICA

## DESCRIPTION

1	VT033A	SINGLE GLASS CERAMIC 250x250x4 R12
2	VT032A	DOUBLE GLASS CERAMIC. 546X246X4
3	6H147	UPPER GLASS SUPPORT STAINLESS STEEL NO PVC XP010/20
4	RS125	G.CERAMIC HEAT ELEMENT 500W 220-230V 1V110045
5	RC044	PRESSED SPRING ZN
6	RS132	THERMOSTAT BULB SUPPORT TUBE
7	2H148A	EXTERNAL CASING UPPER GRILL SUPPORT-STAINLESS STEEL PERF
8	RC051A	WASHER FOR JOINT PIN
9	RC050A	CONTACT GRILL ARTICULATION PIN DE=6,8 L=14 FL.M5
10	OH193B	HANDLE FOR CONTACT GRILL 16x1 SV=1080mm '01
11	MG198A	ROUNDED WOODEN HANDLE FOR CONTACT GRILL
14	OH690A	THREADED BENDED TUBE 13x1 L=106 "XP"
15	VE830	CORD PASSING SPEC. DC=9,5 D2=M13x1
16	OH133B	STAINLESS STEEL BASE XP020/P '01
21	MN1000A0	KNOB WITH SER.SILVER INDEX
22	MN1070A0	PLASTIC DIAL WITH SILVER DIGITS FOR THERMOSTAT 60-355°C
23	TR017	THERMOSTAT 60-355°C
24	VE177	FLUORINE WARNING LIGHT STD 230V
25	VE162	INTERNAL PILOT LAMP SUPPORT
26	VE161	BLACK ELLIPTICAL SUPPORT D16
27	VE168	BIPOLAR NA/NA PUSH-BUTTON
28	VE164	GREEN PILOT WITH GOLD THERMOMETER SERIGRAPHY
29	VE176	OPAQUE SILVER KEY WITH GOLD "0-1" SERIGRAPHY
36	TR240	TERM.TY62R CALIBRATION 140°C +-10°C
37	OH518	ENG-SUPPORTO TERM. SICUREZZA XP010P/20P
38	VM250	"COMB" TERMINAL BOARD BM 5251 1 B3-
39	CE120	EL.CABLE3x1.5 H07RN-F MT1,5+K2/5+SCHUKO
46	RC491	BLIND NUT COVERING COMPASS
47	VI300	LOW NUT M10 H=6 ZN 5589 S.B.E.
48	RC039A	TORSION SPRING CABLE 3.2 DE 24x44
49	VI450	NICKLED BRASS WASHER DI=10 DE=20 S=05
50	VI528	ZINCED WASHER 10x30x2 DIN-9021
51	GN194	GASKET 27x10 Sp=2 PTFE CAR/CARB
52	OH155A	ENG-STAFFA SX PIASTRA SINGOLA E DOPPIA '00
53	OH156A	RIGHT STIRRUP FOR SINGLE/DOUBLE CONTACT GRILL '00
54	VI096	SCREW M10x110 TCEI 12.9 UNI5931
55	VI094	SCREW M10x25 TCEI 12.9 UNI5931

56	6H169A	MECHANISM CASING XP020/P 1198
66	RC047	GLASS CER.HEATING ELEMENT SUPPORT SPRING H=47
67	4E095A	ZINCED BOTTOM PLATE XP020/P 1198 '01
68	OH151A	ENG-TUBO SCOLO GRASSI 60x20x1,5 L=58mm
69	TG080	STAINLESS STEEL TRAY 1/3 GN H=20
70	OL001	SPACER FOR FOOT XP010P/20 35x18x6
71	PD031	BLACK FOOT H=20 4483 EA01X
76	VM1000A0	METAL SCRAPER FOR GLASS CERAMIC